

Technical information

SIGNODUR transparent SIGNODUR transparent TIX

two-component thick layer coating for marking of cycle paths
two-component binder for special manner

DESCRIPTION OF MATERIAL

SIGNODUR transparent / SIGNODUR transparent TIX is a two-component coating of type cold plastic with good physical-chemical characteristics. The system is intended for marking of cycle paths and decoration of small asphalt and concrete surfaces.

DATA ON MATERIAL

Product:	SIGNODUR transparent	SIGNODUR transparent TIX
Colour shade:	Colourless, red	Colourless
Density:	1,40 ± 0,06 kg/dm ³ (20 °C)	1,40 ± 0,06 kg/dm ³ (20 °C)
Viscosity:	27 - 40 s DIN 53211 – 6 (20 °C)	45 - 60 s DIN 53211 – 6 (20 °C)
Solid content:	Min. 99,8 wt. % after addition of catalyst and expiry of reaction	Min. 99,8 wt. % after addition of catalyst and expiry of reaction
Mass mixing ratio:	SIGNODUR transparent : powder catalyst = 100 : 1,8	SIGNODUR transparent TIX : powder catalyst = 100 : 1,8
Pot life:	15 min (20 °C)	15 min (20 °C)

WORKING CONDITIONS	<p>Dry surface, free from dust, salts and oil stains. Air temperature in the area between 10 °C and 30 °C, relative air humidity max. 80%. Surface temperature, without use of additive SIGNODUR accelerator or SIGNODUR inhibitor should obligatory be in the area between 10 °C and 45 °C.</p> <p>The application of material out of the defined conditions is possible according to instructions of Technical information SIGNODUR accelerator SIGNODUR inhibitor.</p>
PREPARATION OF MATERIAL	Material should not be thinned and should be only thoroughly mixed before use.
APPLICATION	<p>Manual application with a trowel, rakes and a roller:</p> <ul style="list-style-type: none"> – the edge of the surface intended for marking is marked with adhesive tape – catalyst is thoroughly mixed into binder base – mixture is strewn on the edged surface and distributed into a layer of thickness 1,5 – 1,8 mm – immediately essentially larger quantity of aggregate than it is necessary for full covering of a binder is strewn – before the material hardens, adhesive tape is removed – unconsolidated aggregate with a binder is sieved and reused.
CONSUMPTION OF MATERIAL	Consumption of material is depending on application method and is with components from 2,0 to 2,5 kg/m ² SIGNODUR transparent + from 0,036 to 0,045 kg/m ² powder catalyst or from 3,0 to 4,5 kg/m ² SIGNODUR transparent TIX + from 0,054 to 0,081 kg/m ² powder catalyst.

CONSUMPTION OF DROP-ON MATERIAL	<p>SIGNODUR transparent: As drop-on material from 4,0 to 5,0 kg/m² dry and powder-free sand aggregate of granulations in the range 0,7 – 2,0 mm is used (1,4 kg/m² for 1 mm thickness of a binder). At marking of cycle paths a very resistant red-coloured quartz sand of the granulation range 0,4 – 1,4 mm is used. Different colour shades of sands may be used for decorative purposes.</p> <p>The granulates of other materials and grater granulations may also be used, yet it is necessary to check the suitability of mutual adhesion in advance.</p> <p>SIGNODUR transparent TIX: As drop-on material from 5,0 to 10,0 kg/m² dry and powder-free sand aggregate of granulations in the range 3,0 – 6,0 mm is used.</p> <p>The colour shade of the chosen sand defines the final colour of the marking, because the binder part of material has no influence on the colour of the marking.</p>
TIME UNTIL PASSED-OVER	<p>At the air and surface temperature 20 °C, relative humidity 60% and material consumption 2,5 to 5,0 kg/m² is the manufacturers recommended time until passed-over approx. 30 minutes. Under different conditions the hardening time is changed.</p>
CLEANING	<p>SIGNO E thinner is used for cleaning of machines and equipment.</p>
WARNINGS	<p>Additional quantity of catalyst and/or additional quantity of SIGNODUR accelerator at the temperature 20 °C will shorten pot life. The decreased quantity of catalyst and/or additional quantity of SIGNODUR inhibitor at the temperature 20 °C will extend pot life.</p> <p>The detailed instructions are stated in Technical information SIGNODUR accelerator SIGNODUR inhibitor.</p> <p>On new asphalt surfaces it is necessary to make a test of material adhesion to surface in advance.</p> <p>Two-component cold plastics should not be applied on badly worn out old markings, painted with thin layer road marking paints.</p> <p>To ensure a suitable adhesion of material to preceding milled old asphalt surfaces the impregnation of the substrate with SIGNO primer 2K PUR is recommended.</p> <p>In case of surface treatment of concrete with protection coatings they should be removed before the application of material. To ensure a suitable adhesion of material to concrete surfaces the substrate should be obligatory impregnated with SIGNO primer 2K PUR.</p>
PACKAGING	<p>25 kg pail</p>
STORAGE	<p>The shelf life of the material, stored in the originally closed packaging in a covered, dry and cool room at the temperature max. 25 °C is minimally 6 months.</p>
REMARKS	<ol style="list-style-type: none"> 1. Safety instructions are stated in a safety data sheet and on a label. 2. For additional explanations see also www.helios.si 3. See additional General instructions to technical information for work with materials intended for road marking. 4. Technical information is the result of knowledge, based on laboratory work and practical experience. In case of use of material out of our control we can take over no responsibility and guarantee only for the quality of material itself. We reserve the right to change the data without preceding notice.

This technical information has supplemented and exchanged all preceding issues.

Helios, Tovarna barv, lakov in umetnih smol, d.o.o.

Količevo 65, 1230 Domžale, Slovenija

T +386 1 722 40 00 | F +386 1 722 43 10 | E info@helios.si | www.helios.si

Technical information

QUARTZ SAND

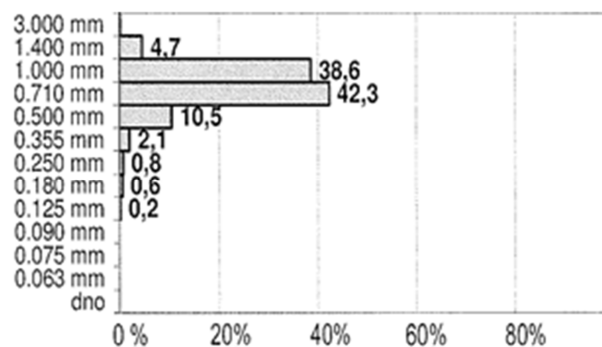
colored quartz sand

DESCRIPTION OF MATERIAL

Colored quartz sand is used as drop-on material for thick layer markings of cycle paths, because it ensures coloration anti-skid resistance of markings.

DATA ON MATERIAL

Colour shade:	Red, green
Type:	MP – 1/GS
Bulk density:	1,5 kg/dm ³ (20 °C)
Average diameter:	0,96 mm
Granulation range:	0,355 – 1,40 mm



CONSUMPTION OF DROP-ON MATERIAL

After the application of binder base immediately essentially larger quantity (4 – 5 kg/m²) of aggregate than it is necessary for full covering of a binder, is strewn. The quartz sand must penetrate through the binder to the ground. After the binder base is hardened, the sand access is eliminated, sieved and reused.

PACKAGING

25 kg sack

STORAGE

The shelf life of the material, stored in the originally closed packaging in a covered and dry room is minimally 5 years.

REMARKS

1. Safety instructions are stated in a safety data sheet and on a label.
2. For additional explanations see also www.helios.si
3. See additional General instructions to technical information for work with materials intended for road marking.
4. Technical information is the result of knowledge, based on laboratory work and practical experience. In case of use of material out of our control we can take over no responsibility and guarantee only for the quality of material itself. We reserve the right to change the data without preceding notice.

This technical information has supplemented and exchanged all preceding issues.

Helios, Tovarna barv, lakov in umetnih smol, d.o.o.

Količevo 65, 1230 Domžale, Slovenija

T +386 1 722 40 00 | F +386 1 722 43 10 | E info@helios.si | www.helios.si

Technical information

QUARTZ SAND

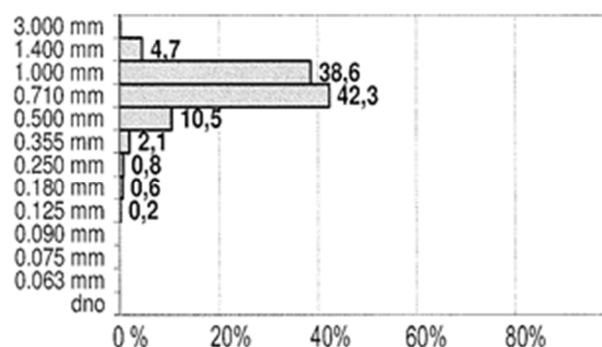
colored quartz sand

DESCRIPTION OF MATERIAL

Colored quartz sand is used as drop-on material for thick layer markings of cycle paths, because it ensures coloration anti-skid resistance of markings.

DATA ON MATERIAL

Colour shade:	Red, green
Type:	MP – 1/GS
Bulk density:	1,5 kg/dm ³ (20 °C)
Average diameter:	0,96 mm
Granulation range:	0,355 – 1,40 mm



CONSUMPTION OF DROP-ON MATERIAL

After the application of binder base immediately essentially larger quantity (4 – 5 kg/m²) of aggregate than it is necessary for full covering of a binder, is strewn. The quartz sand must penetrate through the binder to the ground. After the binder base is hardened, the sand access is eliminated, sieved and reused.

PACKAGING

25 kg sack

STORAGE

The shelf life of the material, stored in the originally closed packaging in a covered and dry room is minimally 5 years.

REMARKS

1. Safety instructions are stated in a safety data sheet and on a label.
2. For additional explanations see also www.helios.si
3. See additional General instructions to technical information for work with materials intended for road marking.
4. Technical information is the result of knowledge, based on laboratory work and practical experience. In case of use of material out of our control we can take over no responsibility and guarantee only for the quality of material itself. We reserve the right to change the data without preceding notice.

This technical information has supplemented and exchanged all preceding issues.

Helios, Tovarna barv, lakov in umetnih smol, d.o.o.

Količevo 65, 1230 Domžale, Slovenija

T +386 1 722 40 00 | F +386 1 722 43 10 | E info@helios.si | www.helios.si